

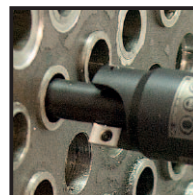
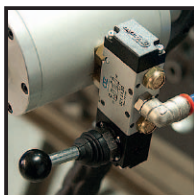
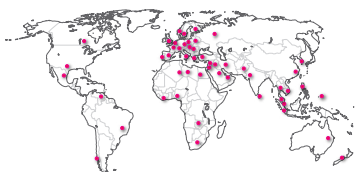


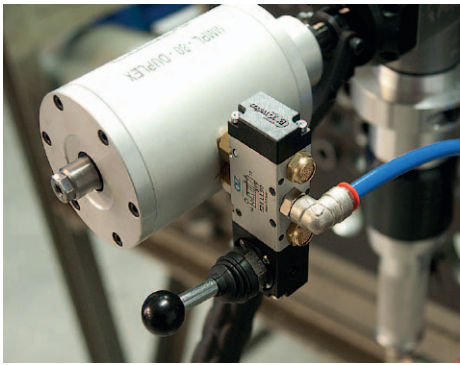
MiniMill-300-LP

Fast Tube Facing and Trimming machine

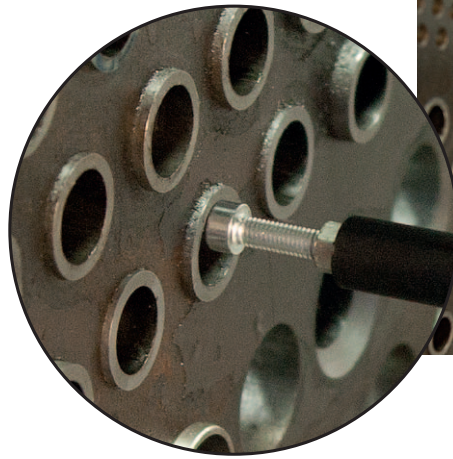
**All New tube facing
and trimming machine
developed to improve
productivity and safety.
The fastest and strongest
facing machine on the
market with unsurpassed
productivity and value.**

- ergonomically engineered for safety and comfortable use, featuring a pneumatic locking system with double piston cylinder
- small and compact milling heads with double cutting edge inserts with 6% cobalt
- for all types of material including: ferrous, non-ferrous, stainless steel, duplex, inconel and titanium
- excellent for seal weld removal applications

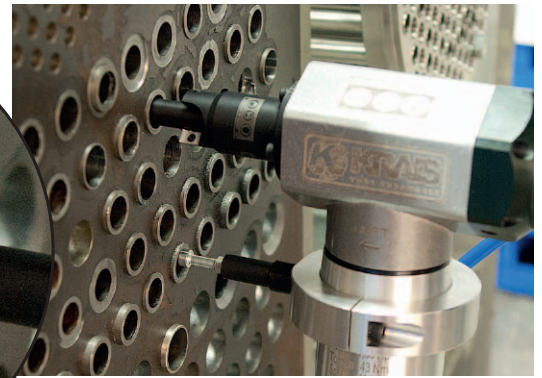




The "Air-Lock" double piston air clamping system is ideal for condenser and heat exchanger production with large number of tubes to face.

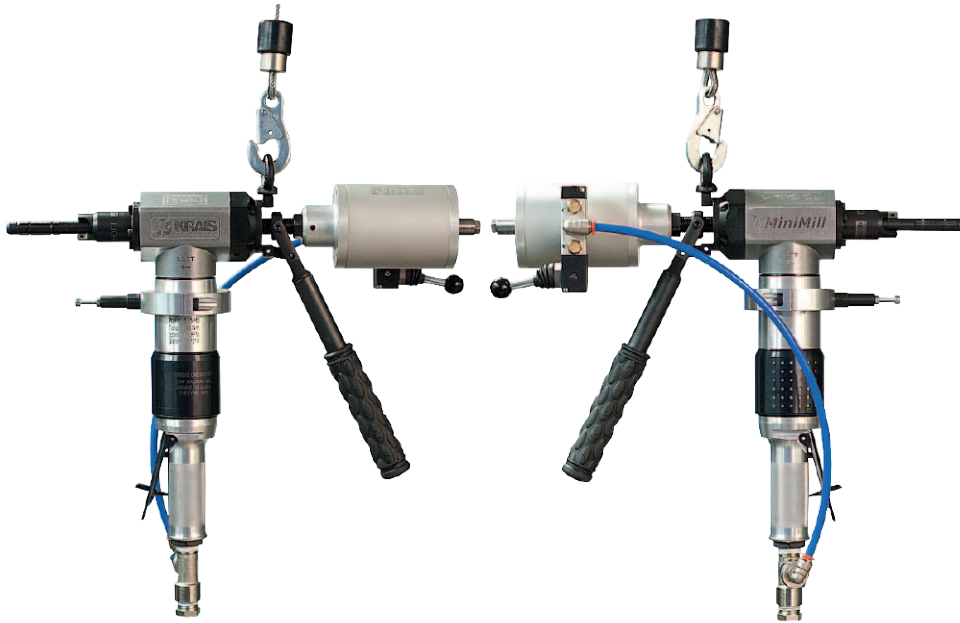


Depth stop adjustment attachment enables precise set up of the tube projection.



Increased productivity, up to 300%!

Double pistons generate double clamping force and instantly and securely locks the tool into the tube.



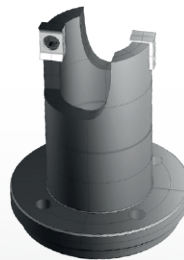
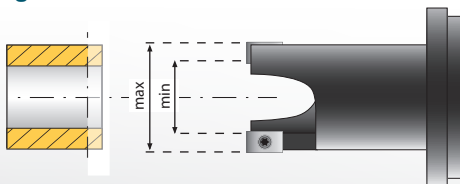
Specification

Free speed	300 rpm
Torque	43 Nm (32 ft-lb)
Motor power	1,3 Hp
Air consumption	1,3 m ³ /min (45 cfm) at 6,2 bar
Clamping range	ID 12,7 – 23 mm, optional to 37 mm (0,5" - 0,9", opt. to 1,45")
Feed stroke	20 mm
Tube capacity	OD 16 to 38 mm (5/8" to 1-1/2")
Tube material	all types (for duplex and inconel our MM3X speed reducer is recommended)
Weight	6,8 kg (14,9 Lbs)

Tube Facing Milling Head



HSS 6% Cobalt



Head type	Tube capacity		Cutter range (min-max)		Degree
	[inch]	GA	[mm]	[inch]	
TFMH - 190	3/4"	12 to 23	13,5-25,5	0,53-1,00	90
TFMH - 222	7/8"	10 to 23	15,4-27,0	0,61-1,06	90
TFMH - 254	1"	10 to 23	18,5-30,5	0,73-1,20	90
TFMH - 317	1-1/4"	10 to 23	25,0-37,0	0,98-1,45	90
TFMH - 381	1-1/2"	10 to 23	31,0-43,0	1,22-1,69	90



KRAIS Tube Expanders

Polska, 55-106 Zawonia
Czachowo 15

tel. +48 71 312 05 96
fax +48 71 387 03 32

<http://www.krais.com>

export@krais.com

